

# CAROTRON

*Driven by Excellence*

## Non-Contact Dancer

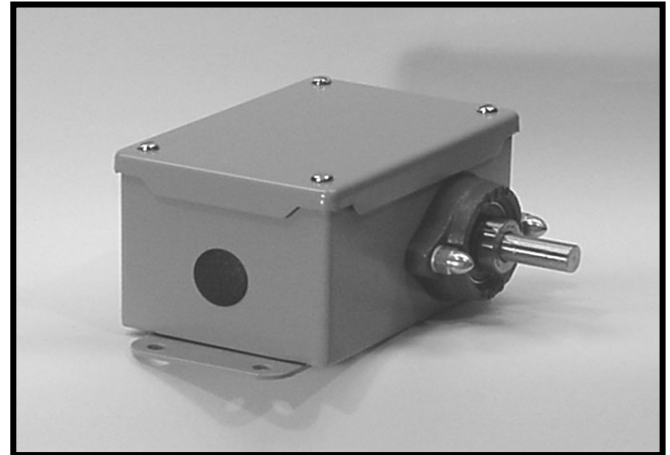
### Models NCD0X-XXX

FLY1058-00 (Rev. D)

3204 Rocky River Road, Heath Springs, SC 29058  
 Phone: 888-286-8614 Fax: 800-286-6063

The Non-Contact Sensor Models NCD01-XXX (without limit switches) and NCD02-XXX (with limit switches) are designed for use in applications where very long equipment life is important.

The standard housing is constructed from 16 gauge steel and is designed to NEMA 12 specifications. A stainless steel NEMA 4X housing is also available. The high quality analog proximity sensor which has no movable parts, senses the position of a cam and gives an output proportional to the angular position of the shaft. The flange mount bearings are maintenance free and very conservatively sized. The stainless steel shaft is faced, to aid in installation and mechanical connections. Limit switch model (NCD02-XXX) contains two high quality normally closed limit switches and two adjustable cams to set extreme travel limits. Wiring connections are made easy by a pre-wired terminal strip inside the enclosure. Quality components, precision and modular construction all combine to produce dependability, simplified installation and competitive pricing.



MODEL: NCD0  - 0

LIMITS OPTION 1: NO LIMITS  
 2: WITH LIMITS

OUTPUT TYPE 0: VOLTAGE  
 C: CURRENT

ENCLOSURE TYPE 0: STEEL  
 S: STAINLESS STEEL

## SPECIFICATIONS

### SENSOR

- Input Power: 15 to 30VDC (30mA max)
- Voltage Output:
  - Range: 0-10V nominal, 1-9V typical
  - Required Output Impedance: >1kohm
- Current Output (Rev B hardware only):
  - Range: 4-20mA nominal, 5-19mA typical
  - Required Output Impedance: <900ohms
- Resolution: Infinite
- Rotation:
  - Mechanical-Continuous
  - Electrical: 310°±1%
  - Linearity tolerance: 1%

### LIMIT SWITCHES (NCD02-XXX Only)

- Electrical Rating: 5amps, 250VAC

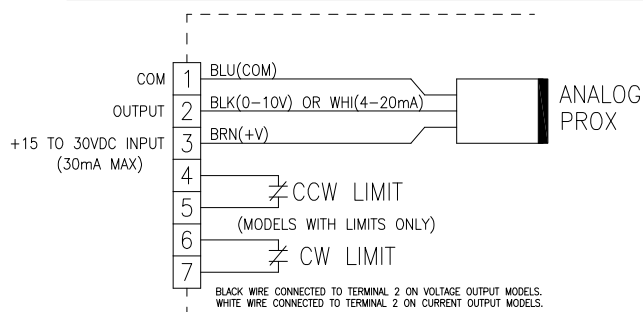
### ENCLOSURE

- Construction: 16 gauge steel
- Finish: (Standard enclosure) ANSI 61 gray polyester powder coating
- NEMA 12 and NEMA 4X

### DANCER SHAFT

- Construction: Stainless Steel
- Diameter: 1/2-inch with flat

## CONNECTIONS



## DIMENSIONS

