

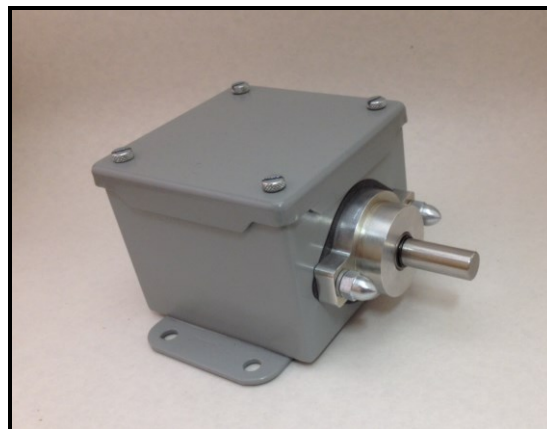


# Teachable Multi Turn Position Sensor Model MTPS-16-010

3204 Rocky River Road, Heath Springs, SC 29058  
Phone: 888-286-8614 Fax: 800-286-6063

## GENERAL DESCRIPTION

The Teachable Multi Turn Position Sensor is designed for applications that would typically require mechanical gearing to achieve the full range of the sensor. Our Multi Turn Position Sensor can source 0 – 10VDC (4-20mA upon request) output by simply pressing a pushbutton at each end of travel. The travel range of our standard sensor can be taught from a fraction of a turn up to 16 turns (256 Max upon request). Once the sensor is taught the minimum and maximum travel positions, it will retain these values even with the loss of power. Typical applications for this sensor include Dancer Position, Accumulator Position, Slide Gate Position or any application requiring position feed back. The teachable sensor is mounted in a steel housing that is constructed from 16 gauge steel and is designed to meet the requirements of NEMA 12. This high quality position sensor has an accuracy of +/- 0.35° (+/-21 arc-min). Quality components, precision and modular construction all combine to produce dependability, simplified installation and competitive pricing.



MODEL MTPS-16-010

## SPECIFICATIONS

### SENSOR

Input Voltage: 12 to 30VDC  
Input Current: 30mA–125mA (Voltage Dependent)  
Output Voltage: 0-10VDC  
Output Current: 10mA  
Accuracy: +/-0.35° (+/-21 arc-min)  
Vibration: 0-1000Hz, 10G  
Temperature: -30°C to +85°C

### ENCLOSURE

Construction: 16 gauge steel  
Finish: ANSI 61 gray polyester powder coating  
NEMA 12 and 13

### DANCER SHAFT

Construction: Stainless Steel  
Diameter: ½-inch with flat

## CONNECTIONS AND DIMENSIONS

