



3204 Rocky River Road, Heath Springs, SC 29058
Phone: 803-286-8614 Fax: 803-286-6063



Model D14523-000

The **CORTEX[®] LT V2** is Carotron's 2nd generation Industrial System controller. It was developed with the flexibility to handle many different industrial applications. Driven by a powerful DSP (digital signal processor) the unit has the speed and processing capability to handle even the most difficult tasks. Each device is programmed with MS-Windows (XP and higher) compatible CaroLink software (available free on our website). A USB serial cable is typically used to interface between the device and a PC. The software allows specific application configurations to be selected, configured, and downloaded into the unit. The CaroLink software also allows for calibration, monitoring, program storage, and I/O simulation.

A feature of the CaroLink software is the "Application Builder". It provides a wizard tool for selecting pre-configured application presets. Through a series of application questions, the "Builder" pulls together the application blocks to perform the desired tasks. Advanced users can also access the system blocks directly and modify the standard configurations. System blocks are displayed graphically in the software to aid in understanding the functions to be performed by each block. Analog, Frequency and Digital I/O functions are typically used for interfacing the unit to real world applications. The Analog and Frequency inputs are easily scaled by the software to provide for offset and span control of the input signals. Analog and Frequency outputs are typically used to provide speed, torque, and/or tension control functions. Digital inputs and outputs provide system logic for parameter selection or machine logic functions.

Numerous communications options allow the unit to interface to HMIs, PLCs, etc...

Typical Applications

- Constant Tension Center Wind (CTCW)
- Dancer Position
- Center Unwind (Driven or brake)
- Loadcell Tension
- Pump Control
- Remote I/O
- Test Equipment
- Custom Applications

New features vs the first generation unit

- Bipolar Analog Inputs (-10..+10VDC)
- Bipolar Analog Outputs (-10..+10VDC)
- Counter functionality on both Frequency Inputs
- Independent Frequency Outputs
- Isolated serial communications (Com A & C)
- Isolated Modbus[®] TCP Ethernet interface (Com B)
- Isolated USB serial interface (Com D)



Specifications

Input Power

- 115 VAC \pm 10%, 50/60 Hz \pm 2 Hz

Internal Power Supplies

- 24VDC @ 50mA
- +15VDC @ 100mA
- 10VDC @ 20mA
- 5VDC @ 100mA

Analog Inputs (4)

- 13 bit resolution (12bit +sign)
- Unipolar Mode: 0..+10VDC
- Bipolar Mode: -10..+10VDC

Frequency (High Speed Digital) Inputs (2)

- 50KHz Max, square wave
- Voltage: +15 VDC max
- High Speed Counter capability

Digital Inputs (5)

- 30VDC max
- Sink/Source selectable

Analog Outputs (2)

- 13 bit resolution (12 bit + sign)
- Unipolar Mode: 0..+10VDC
- Bipolar Mode: -10..+10VDC

Relay Outputs (2)

- Form-C contact
- Rated for 3A @ 115 VAC & 30 VDC

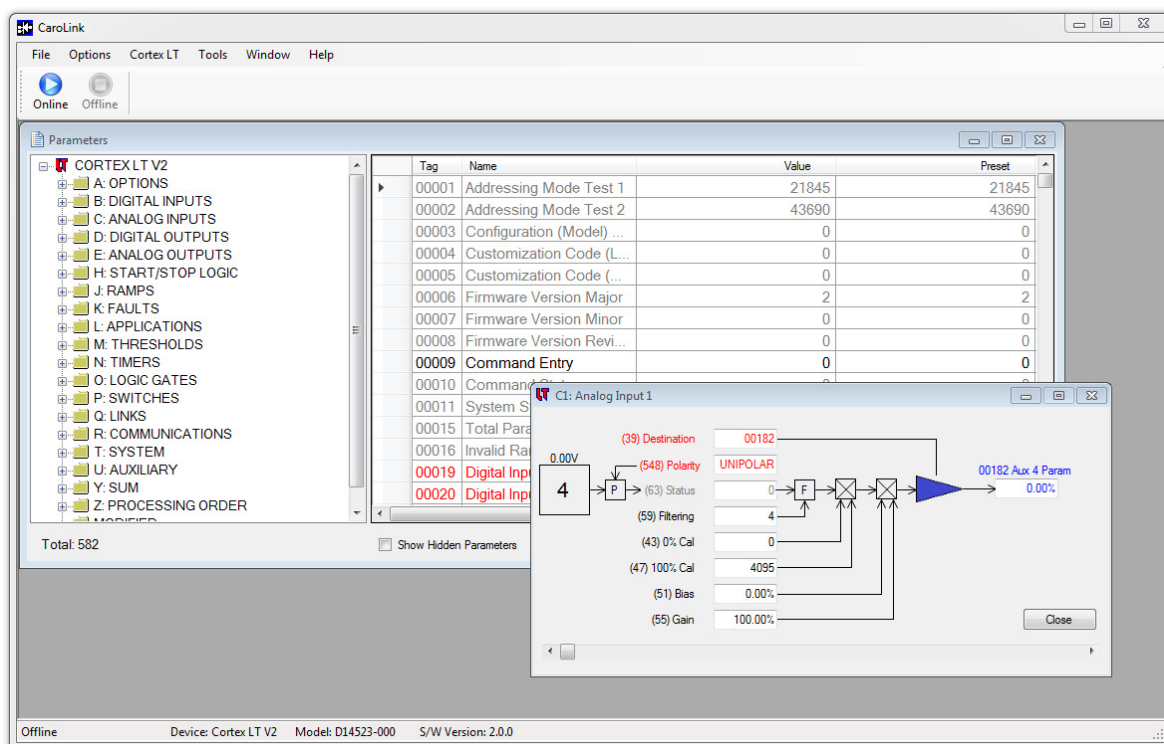
Frequency/Digital Outputs (2)

- Isolated Open collector output
- 50KHz Max, square wave

Isolated Communications (4)

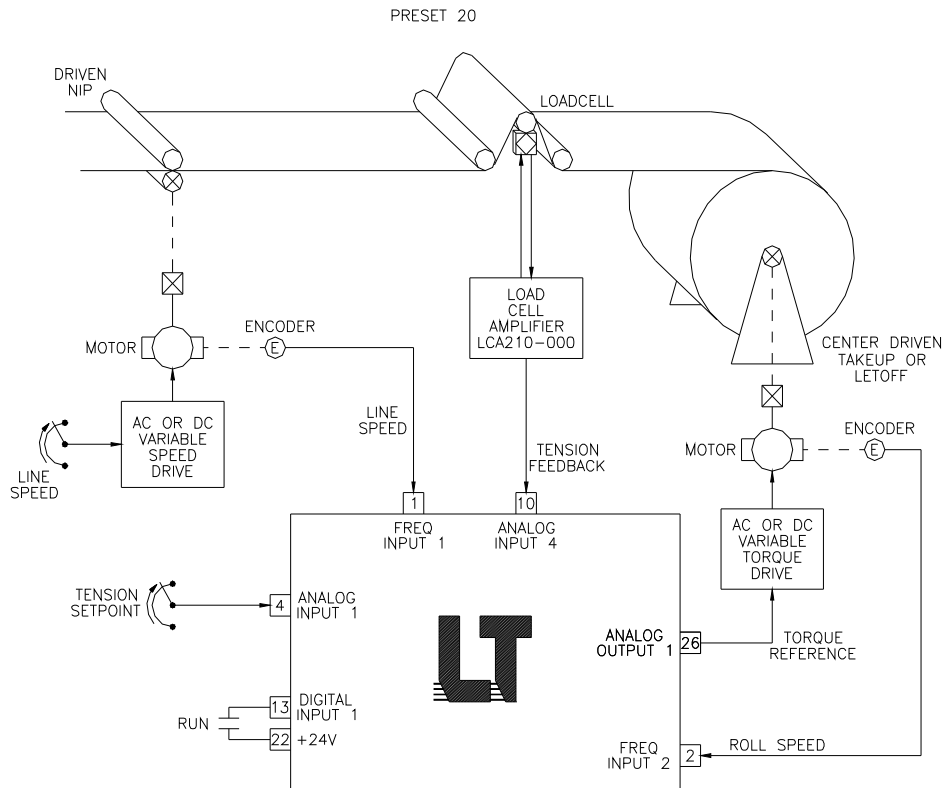
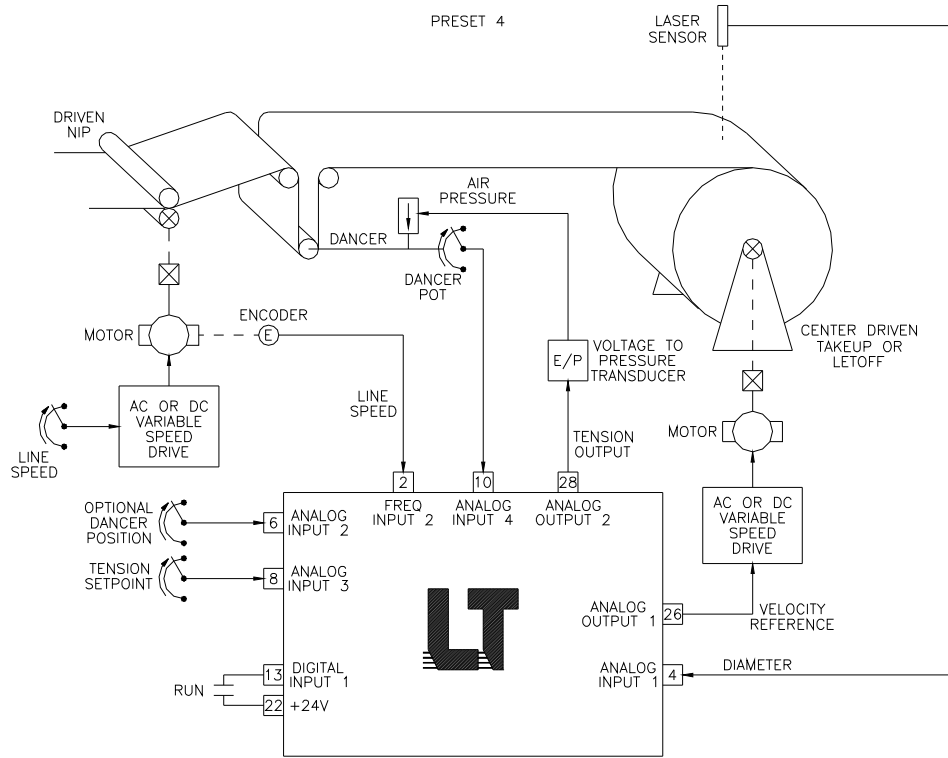
- Com A: Modbus[®] RS422/485 Terminals
- Com B: Modbus[®] TCP Ethernet
- Com C: Modbus[®] RS232/422 RJ12
- Com D: USB

CaroLink Software Screenshot

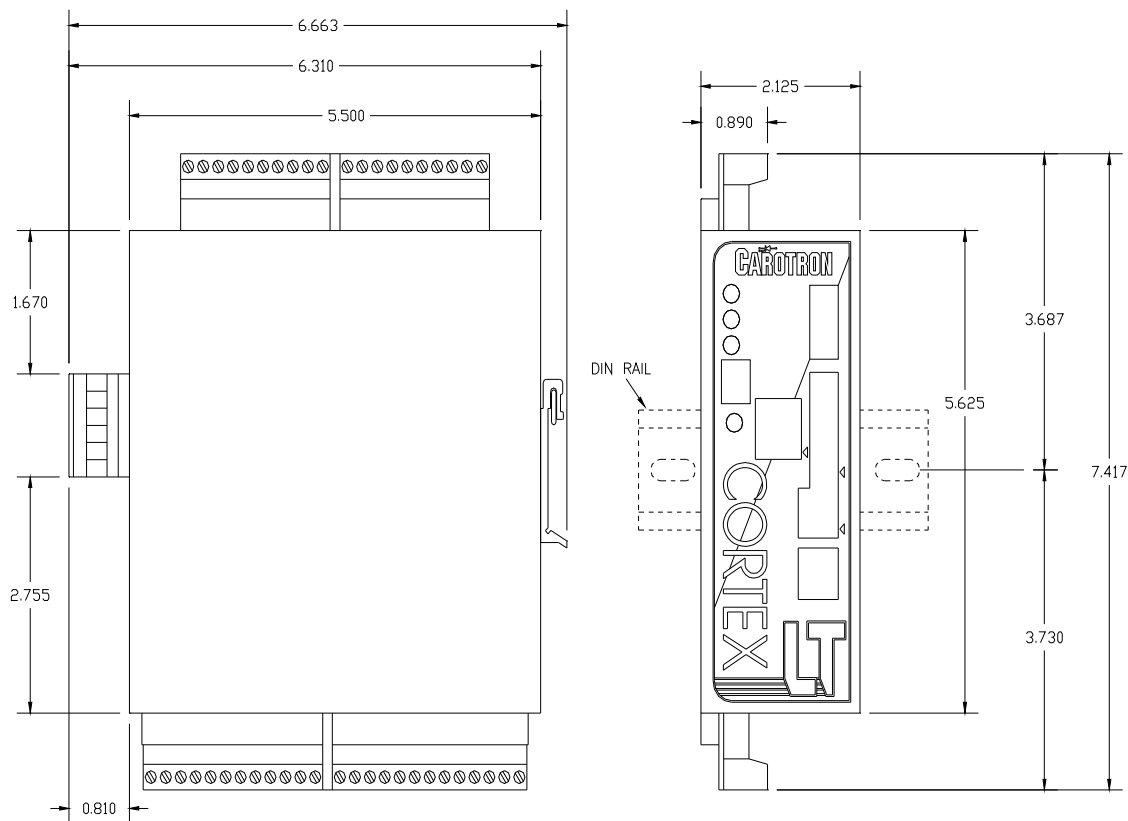


Application Examples

Below are two examples of the over 20 preset applications the Cortex LT can handle. Please refer to the user manual or contact us for additional details.

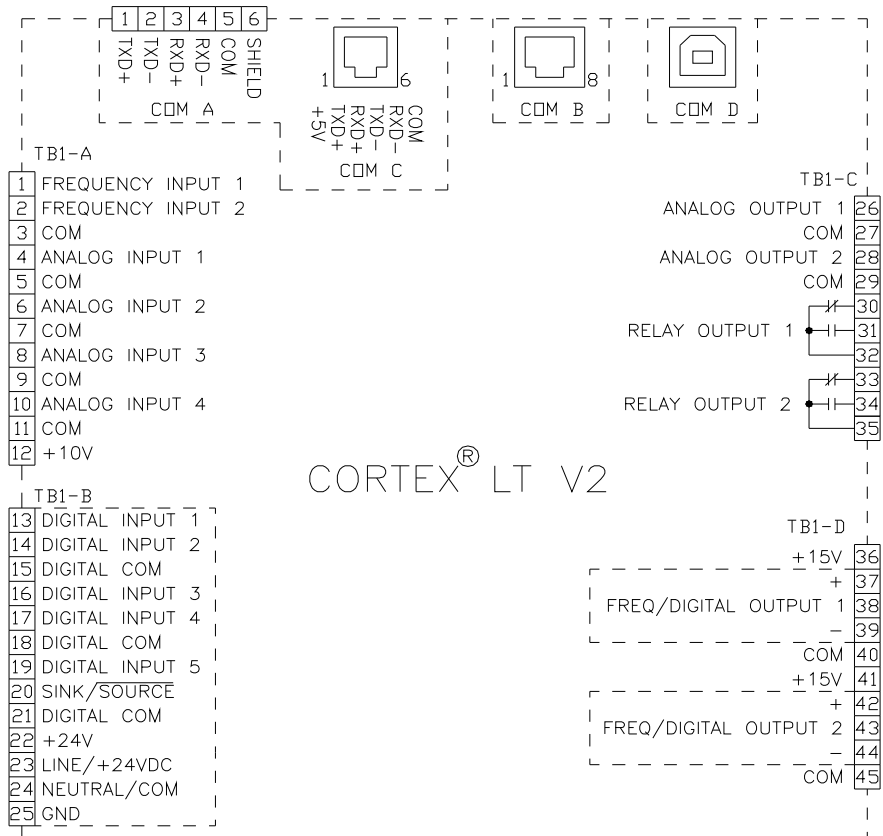


Dimensions



NOTES:
1. ALL DIMENSIONS ARE IN INCHES.

Connections



Ordering Options

D14523-000

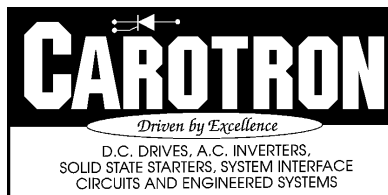
Device only

CLT2020-000

Kit that includes device, USB cable, and PC software

Cortex LT V2 Industrial Controller **Model D4523-000**

View or download the complete instruction manual (MAN1064-00) from www.carotron.com.



3204 Rocky River Road
Heath Springs, SC 29058
Phone: (803) 286-8614
Fax: (803) 286-6063
Email: saleserv@carotron.com
Web: www.carotron.com
FLY1060-00 (Rev A)
Issued 10-25-2019