
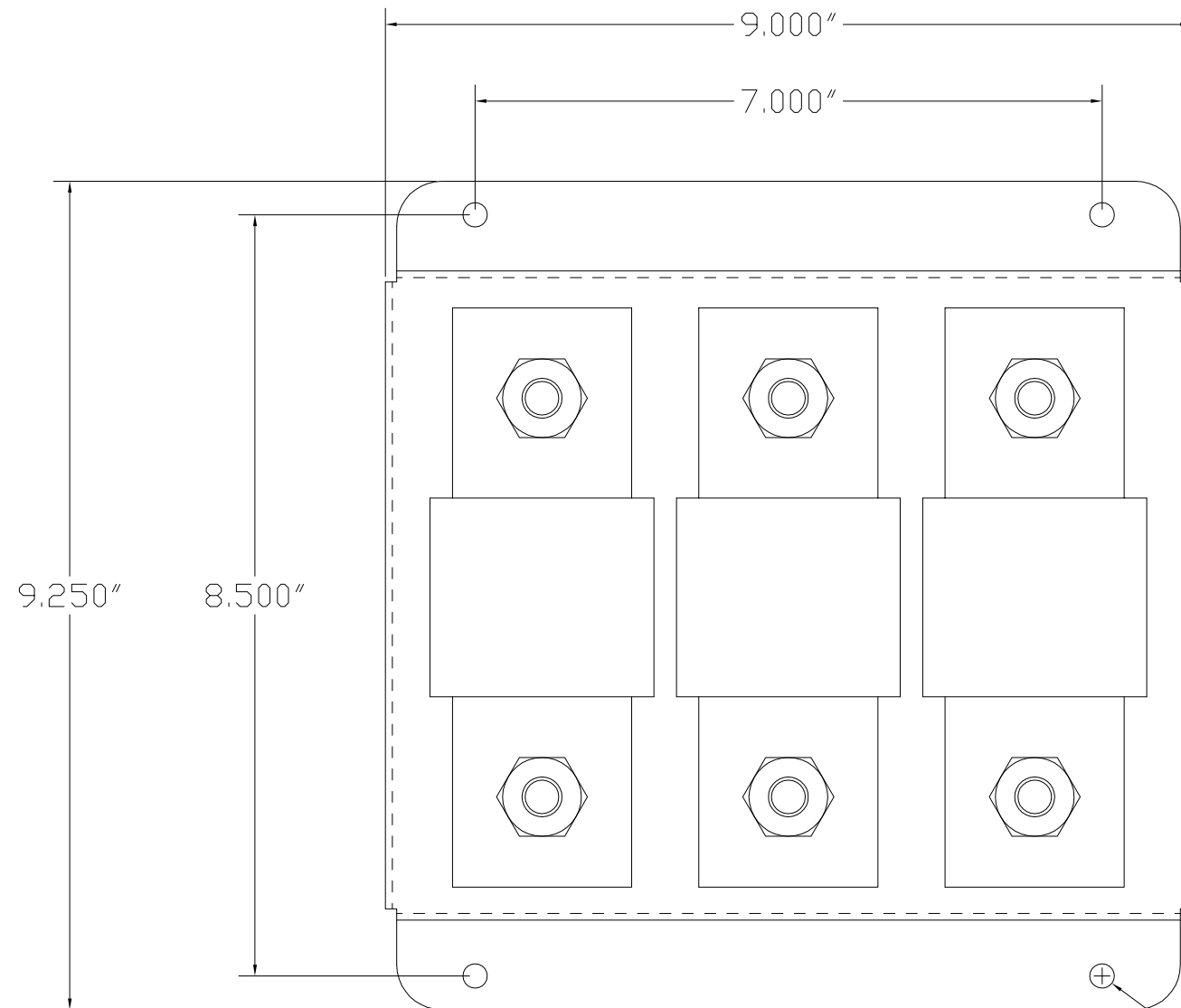


EPFK-020, EPFK-040, EPFK-060, EPFK-075, EPFK-100, EPFK-125, EPFK-150

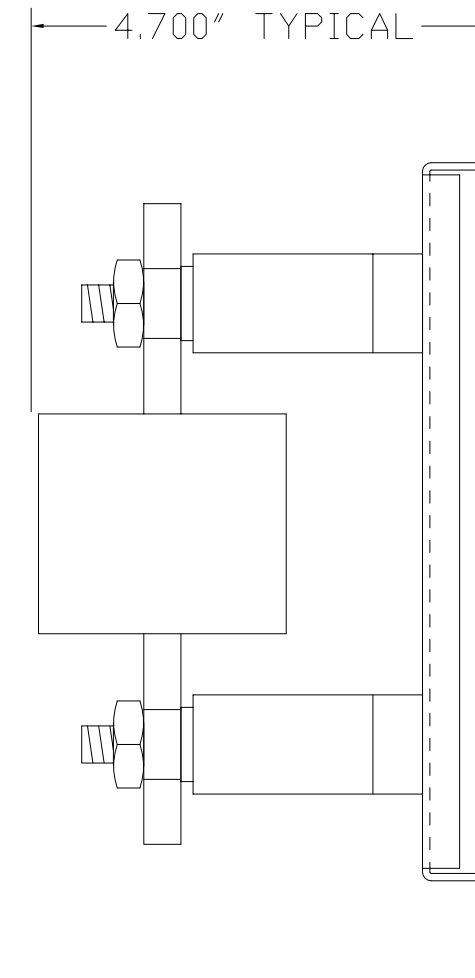
NOTES:
1. ALL DIMENSIONS ARE IN INCHES.

| | | |
|---|-------------------------|--|
| DRAWN BY: BKP | DATE: 8/19/13 |  <i>Driven by Excellence</i> |
| APPROVED BY: | DATE: | |
| TOLERANCES: + 2 DEC. PL. = .010" 3 DEC. PL. = .005" | | HEATH SPRINGS, SC TEL 803-286-8614 FAX 803-286-6063 |
| SCALE: | | TITLE: ELITE PRO FUSE KIT MOUNTING DIMENSIONS |
| DRAWING NUMBER: D13043 | | REV. B SH. 1 OF 4 |



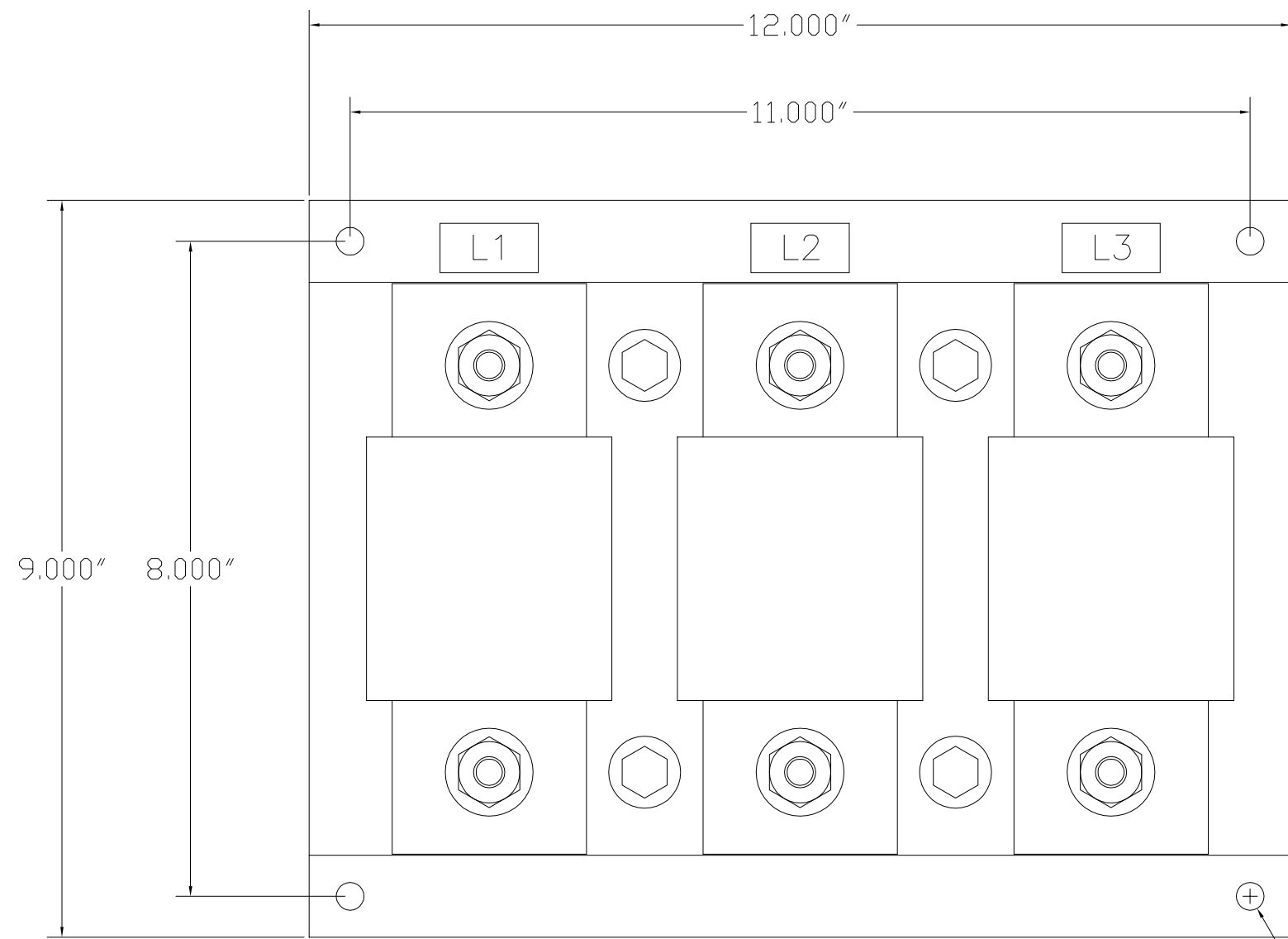
EPFK-200, EPFK-250, EPFK-300

CLEARANCE HOLE FOR 1/4" BOLT



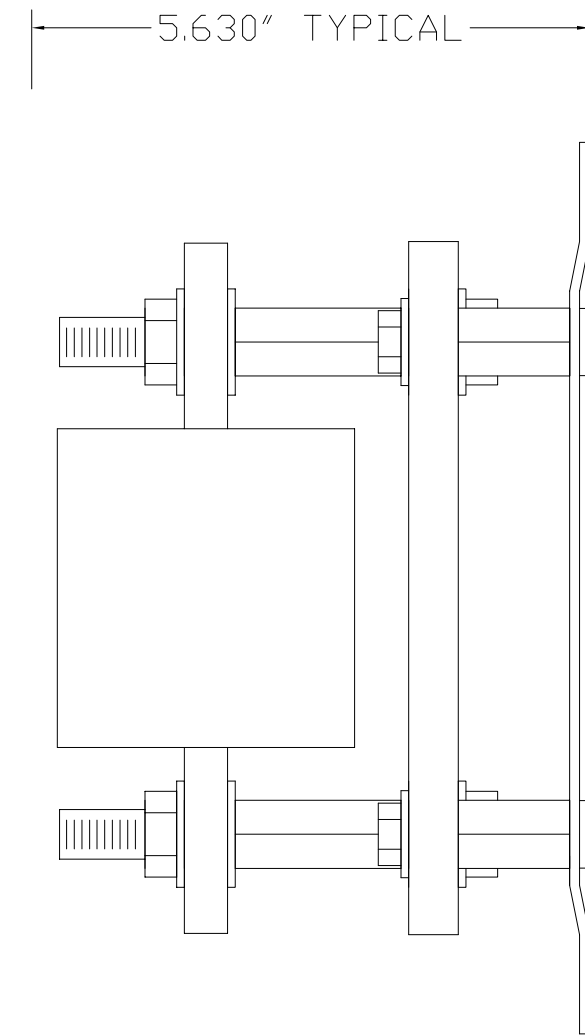
NOTES:
1. ALL DIMENSIONS ARE IN INCHES.

| | | |
|---|-------------------------|---|
| DRAWN BY: BKP | DATE: 8/19/13 | |
| APPROVED BY: | DATE: | |
| TOLERANCES: + 2 DEC. PL. = .010" 3 DEC. PL. = .005" | | HEATH SPRINGS, SC TEL 803-286-8614 FAX 803-286-6063 |
| SCALE: | | TITLE: ELITE PRO FUSE KIT MOUNTING DIMENSIONS |
| DRAWING NUMBER: D13043 | | REV. B SH. 2 OF 4 |



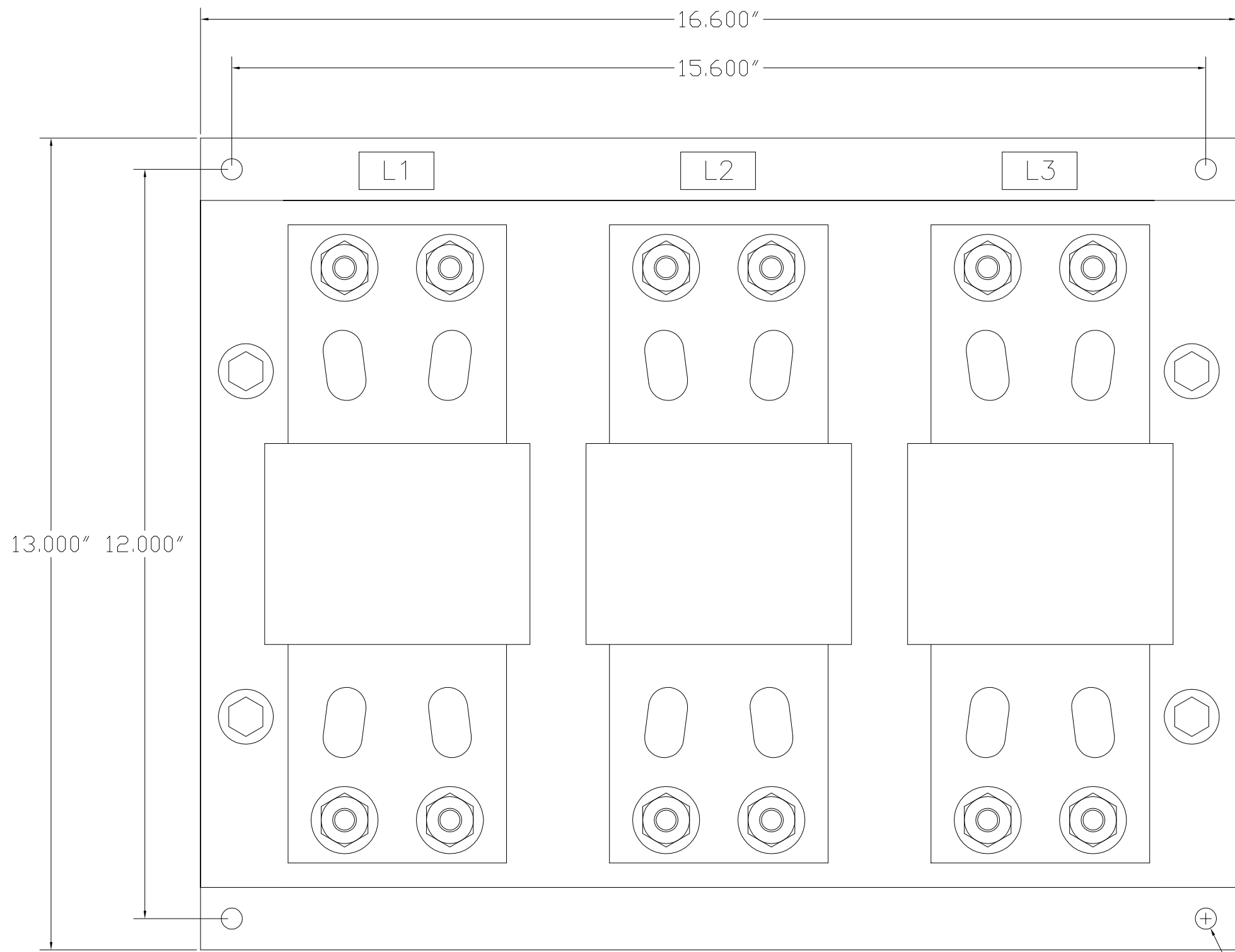
EPFK-400, EPFK-500

CLEARANCE HOLE FOR 5/16" BOLT



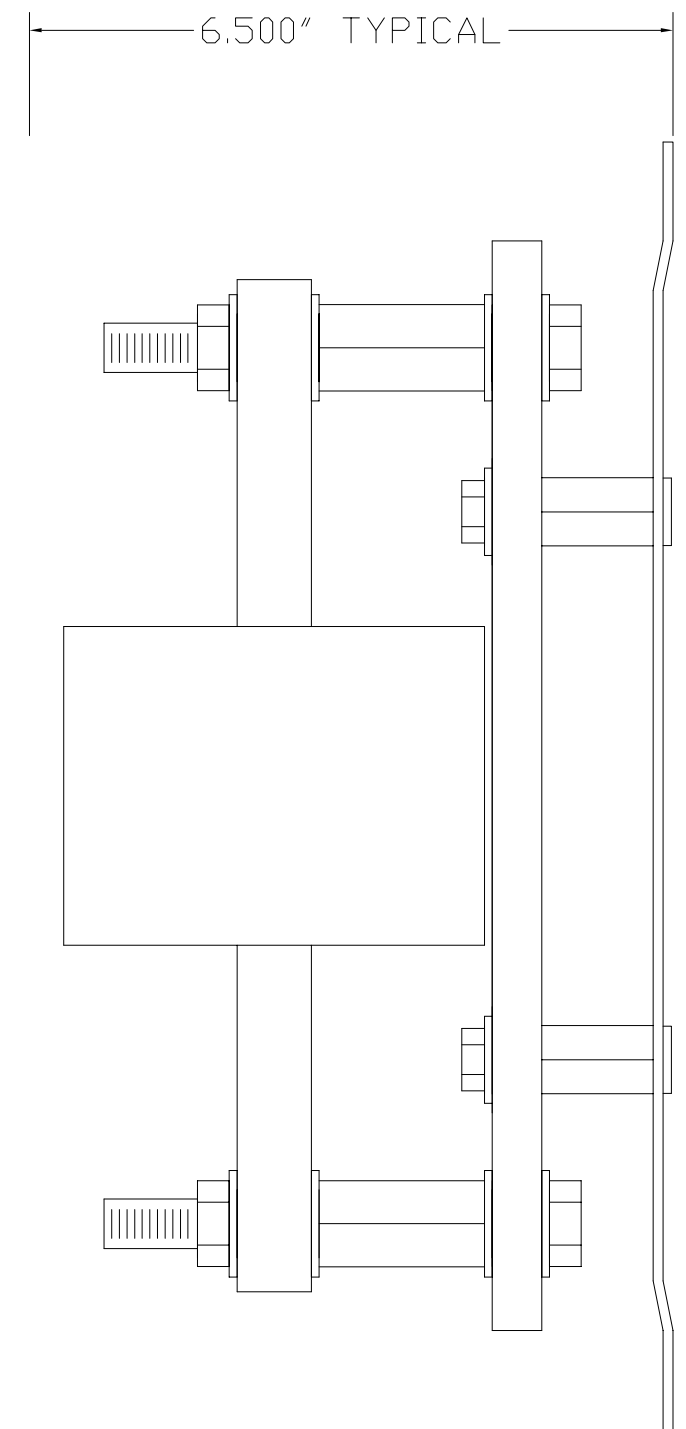
NOTES:
1. ALL DIMENSIONS ARE IN INCHES.

| | | |
|---|-------------------------|---|
| DRAWN BY: BKP | DATE: 8/19/13 | |
| APPROVED BY: | DATE: | |
| TOLERANCES: + 2 DEC. PL. = .010" 3 DEC. PL. = .005" | | HEATH SPRINGS, SC TEL 803-286-8614 FAX 803-286-6063 |
| SCALE: | | TITLE: ELITE PRO FUSE KIT MOUNTING DIMENSIONS |
| DRAWING NUMBER: D13043 | | REV B SH. 3 OF 4 |



EPFK-600, EPFK-700

CLEARANCE HOLE FOR 5/16" BOLT



NOTES:
1. ALL DIMENSIONS ARE IN INCHES.

| | | |
|---|-------------------------|---|
| DRAWN BY: BKP | DATE: 8/19/13 | |
| APPROVED BY: | DATE: | |
| TOLERANCES: + 2 DEC. PL. = .010" 3 DEC. PL. = .005" | | HEATH SPRINGS, SC TEL 803-286-8614 FAX 803-286-6063 |
| SCALE: | | TITLE: ELITE PRO FUSE KIT MOUNTING DIMENSIONS |
| DRAWING NUMBER: D13043 | | REV B SH. 4 OF 4 |